


NOTES : Unless Otherwise Specified

1. FAB PER IPC-A-600.
2. MATERIAL: EPOXY FIBERGLASS, NEMA GRADE FR-4.
2 OZ. COPPER FINISHED ON OUTER LAYERS.
1 OZ. COPPER FINISHED ON INNER LAYERS.
THICKNESS .062 +/- .006 TOTAL OF 4 LAYERS.
FLAMABILITY RATING: 94 V-0 MINIMUM .
3. SIZE: DIMENSIONS AND TOLERANCES SHOWN.
0.00 ARE PRIMARY DATUMS.
4. DRILLING: DRILL HOLES PER SCHEDULE. PLATE THROUGH
HOLES WITH COPPER, .001 INCH THICK MIN. ALL
HOLE SIZES ARE SPECIFIED AFTER PLATING.
HOLE LOCATION TOLERANCES ARE +/- .003
INCH IN RELATION TO CENTER
5. FINISH: SMOBC USING LPI BOTH SIDES COLOR GREEN.

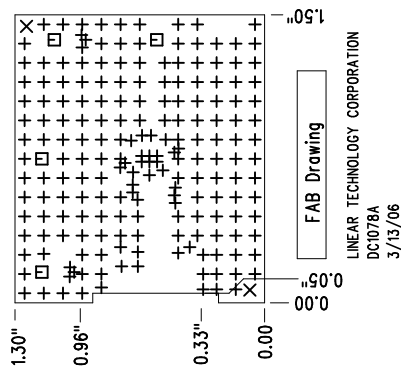
GOLD IMMERSION BOTH SIDES.

6. SILKSCREEN : USING WHITE NON-CONDUCTIVE EPOXY INK.
7. DO NOT ALTER ARTWORK e.g. TO ADD LOGO OR DATE CODE.
8. CONTROLLED 50 OHM IMPEDANCE (AT 1 GHz FREQ.)
FOR TRACE WIDTH 30 MILS, FOR LAYER 1-2.
-
- ⑨ SUBJECT TO CHANGE BY MANUFACTURER, DEPENDING ON DIELECTRIC
CONSTANT DEVIATIONS. PLEASE CONSULT LTC.

FAB DRAWING

<div>APPROVALS</div>			<div><div>1630 McCarthy Blvd. Milpitas, CA 95035 Ph: (408)432-1900</div></div>		<div>TITLE: LT57570EDD Log Mean Square Power Detector</div>	
<div>DRAWN</div>		<div>INIT</div>	<div>DATE</div>			
<div>CHECK</div>						
<div>DESIGN</div>		<div>A Karpova</div>		<div>3/13/06</div>		
<div>ENGR</div>		<div>D Stuetzle</div>		<div>3/13/06</div>		
<div>SCALE = NONE</div>			<div>DES-260050</div>		<div>SHT 1 of 1</div>	

UNLESS OTHERWISE SPECIFIED
DIMENSIONS ARE IN INCHES
TOLERANCES ON ANGLE ± 1
2 PLACE $\pm .01$ 3 PLACE $\pm .005$
INTERPRET DIM AND TOL
PER ASME Y14.5M - 1994



SIZE	QTY	SYM	PLTD	TOL
10	193	+	YES	+/-0.003
70	2	X	NO	+/-0.003
63	4	□	YES	+/-0.003

